



DEC950

Doug's Electric Cutouts Motor Assembly Installation Instructions

1. Remove the 6 screws from the parameter of the cutout body. Figure A
2. Remove outlet side plate and cutout spacers.
3. Remove cutout gate.
4. Remove remove pin from motor shaft.
5. Remove three screws that hold motor to cutout body. Figure B
6. Remove the motor assembly from the cutout body.
7. Remove three screws from aluminum motor adapter. Figure C
8. Install adapter on the replacement motor
9. Use the provided hardware and re-assemble in the reverse order. Use thread locker on all screws to prevent screws from loosening.

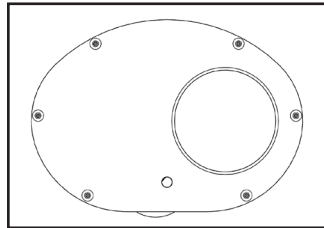


Figure A

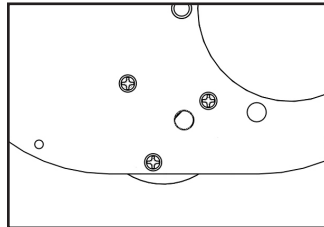


Figure B

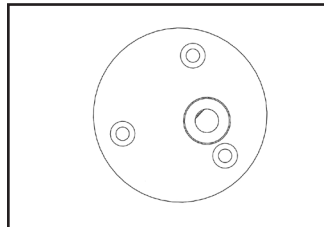


Figure C



DEC950

Doug's Electric Cutouts Motor Assembly Installation Instructions

1. Remove the 6 screws from the parameter of the cutout body. Figure A
2. Remove outlet side plate and cutout spacers.
3. Remove cutout gate.
4. Remove remove pin from motor shaft.
5. Remove three screws that hold motor to cutout body. Figure B
6. Remove the motor assembly from the cutout body.
7. Remove three screws from aluminum motor adapter. Figure C
8. Install adapter on the replacement motor
9. Use the provided hardware and re-assemble in the reverse order. Use thread locker on all screws to prevent screws from loosening.

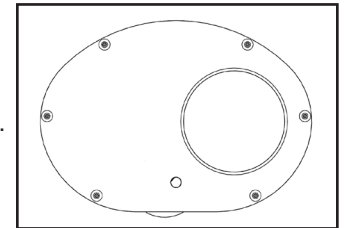


Figure A

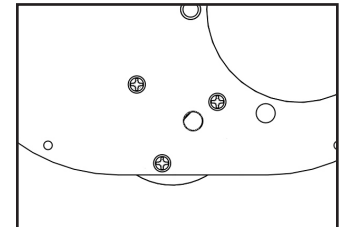


Figure B

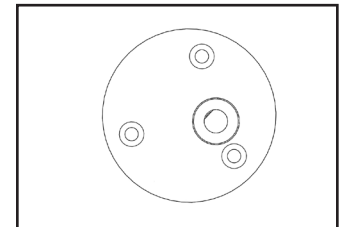


Figure C

